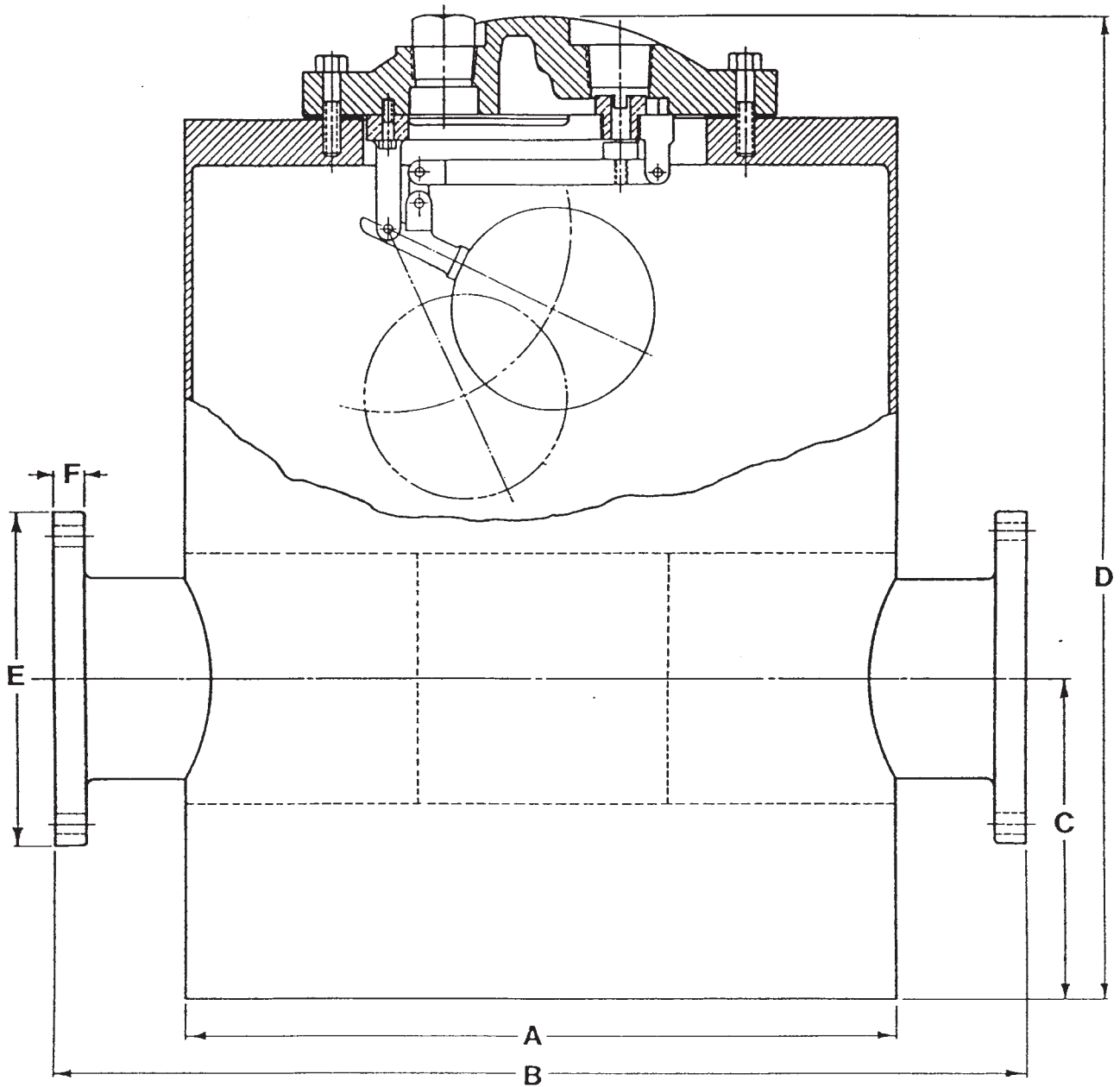


AIR ELIMINATOR

CERTIFIED BY: _____

DATE: _____



VALVE SIZE	MODEL NUMBER	A	B	C	D	125 LB. CLASS				250 LB. CLASS			
						E	F	DIA. OF HOLES	NO. OF HOLES	E	F	DIA. OF HOLES	NO. OF HOLES
1"	1001	10	18	2	18	4 ¹ / ₄	7 ⁷ / ₁₆	5 ⁵ / ₈	4	4 ⁷ / ₈	11 ¹¹ / ₁₆	3 ³ / ₄	4
2"	1002	12	20	3	20 ¹ / ₂	6	11 ¹¹ / ₁₆	3 ³ / ₄	4	6 ¹ / ₂	7 ⁷ / ₈	3 ³ / ₄	8
3"	1003	12	20	5	20 ¹ / ₂	7 ¹ / ₂	3 ³ / ₄	3 ³ / ₄	4	8 ¹ / ₄	1 ¹ / ₈	7 ⁷ / ₈	8
4"	1004	14	22	6	22 ¹ / ₂	9	15 ¹⁵ / ₁₆	3 ³ / ₄	8	10	1 ¹ / ₄	7 ⁷ / ₈	8
6"	1006	18	26	7	25 ¹ / ₂	11	1	7 ⁷ / ₈	8	12 ¹ / ₂	1 ⁷ / ₁₆	7 ⁷ / ₈	12
8"	1008	18	26	9	29	13 ¹ / ₂	1 ¹ / ₈	7 ⁷ / ₈	8	15	1 ⁵ / ₈	1	12
10"	1010	24	30	10	30	16	1 ³ / ₁₆	1	12	17 ¹ / ₂	1 ⁷ / ₈	1 ¹ / ₈	16
12"	1012	24	30	12	30	19	1 ¹ / ₄	1	12	20 ¹ / ₂	2	1 ¹ / ₄	16
14"	1014	30	40	12	39	21	1 ³ / ₈	1 ¹ / ₈	12	23	2 ¹ / ₈	1 ¹ / ₄	20
16"	1016	36	50	15	48	23 ¹ / ₂	1 ⁷ / ₁₆	1 ¹ / ₈	16	25 ¹ / ₂	2 ¹ / ₄	1 ³ / ₈	20

FOR LBS. W.P.

DATE
09-01-03



DRWG. NO.
S-1000

SPECIFICATIONS OTHER SIDE



SPECIFICATIONS

SERIES 1000 AIR ELIMINATOR

The Air Eliminator shall be heavily fabricated hot rolled steel having a shell and head which includes 1/16" corrosion allowance beyond the normal thickness.

The Air Eliminator shall have internal baffles sufficient to create a disturbance to the media passing through. The Air Eliminator main housing shall have a minimum of six times greater flow area than the inlet or outlet.

The Air Eliminator shall operate (open) under pressure and allow entrained air in the media to be automatically vented as media passes thru the main Air Eliminator housing. After air escapes, the air release valve orifice will close by means of a compound lever mechanism. The air release valve orifice will then stay closed until more air accumulates and the opening cycle repeats. The automatic air release mechanism shall be a compound lever type to allow maximum orifice and venting capacity. All internal working parts shall be bronze and stainless steel for corrosion resistance. The shut-off media needle shall be Buna-N and resilient to resist leaking due to pipeline or pump vibrations and be drop-tight. The stainless steel float must withstand a minimum pressure of 1000 psi.

Air Eliminator exterior to be painted Universal Primer for high resistance to corrosion.

Materials of Construction:

Complete housing & internal baffles-hot rolled carbon steel; Air Release mechanism - bronze; Needle - Buna-N; Float - Stainless Steel; Cover - Cast iron.

Temperature rating - 250° F for Buna-N; 425° F for Viton Needles.

All materials of construction shall be certified in writing to conform to A.S.T.M. specifications as follows:

Body	H.R.S	ASTM A36
Cover	Cast Iron	ASTM A48, Class 30
Internal linkage	Bronze	ASTM 584
Float*	Stainless Steel	ASTM A240
Needle	Buna-N	
Exterior Paint	Universal Primer	FDA Approved for Potable Water

*** Float design may vary on certain sizes**

The Air Eliminator to be APCO Series 1000, as manufactured by Valve & Primer Corporation, Schaumburg, Illinois, U.S.A.