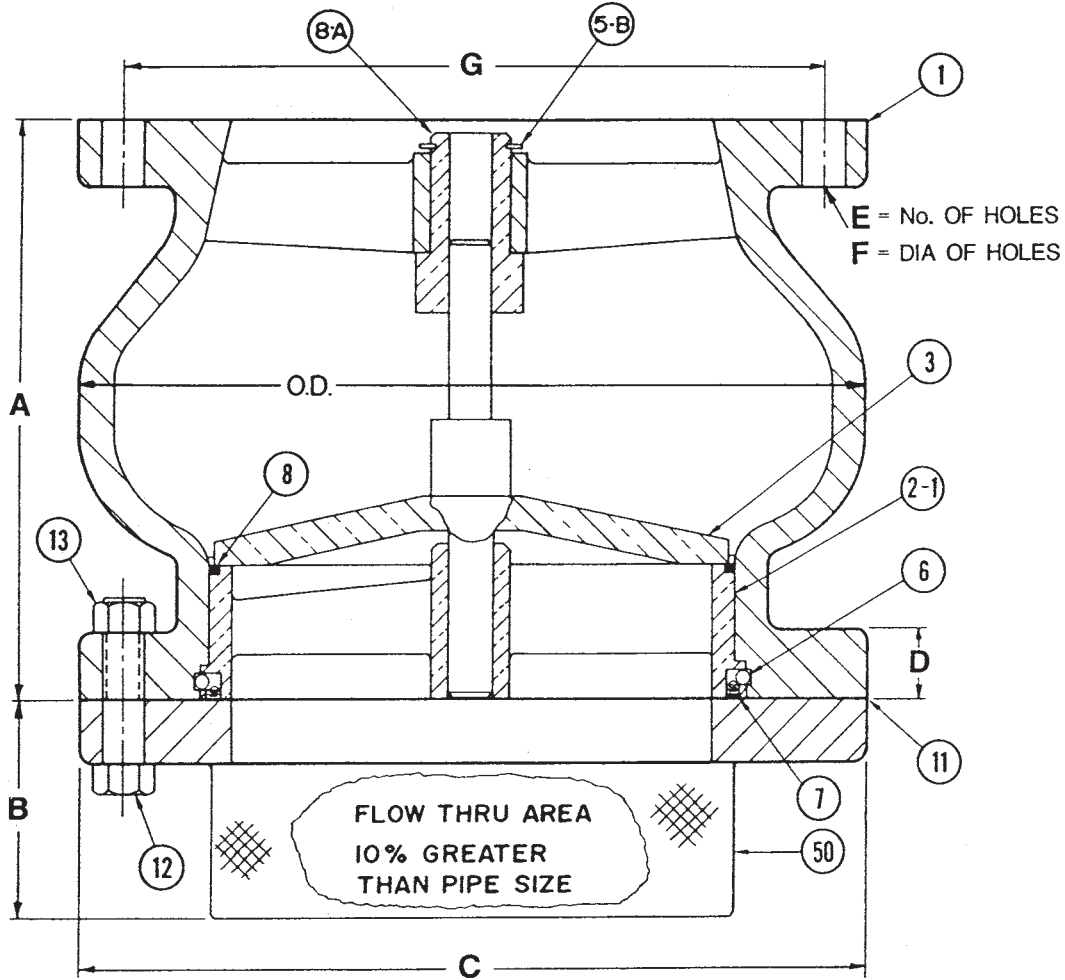


# FOOT VALVE



CERTIFIED BY: \_\_\_\_\_

DATE: \_\_\_\_\_

### PARTS LIST

NO.	NAME	MATERIAL
1	BODY	CAST IRON
2-1	SEAT	BRONZE
3	PLUG	BRONZE
5-B	RETAINING RING	S. S.
6	SEAT RETAINING BALL	S. S.
7	SEAT RETAINING SCREW	S. S.
8	RESILIENT SEAT	BUNA-N
8A	BUSHING	BRASS
11	GASKET	LEXIDE
12	FLANGE BOLT	STEEL
13	FLANGE NUT	STEEL
50	STRAINER ASSEMBLY	

	VALVE SIZE	3"	4"	5"	6"	8"	10"	12"	14"	16"	18"	20"	24"	30"	36"
125 LB. CLASS	A	6	7 $\frac{1}{4}$	8 $\frac{1}{2}$	9	10 $\frac{1}{8}$	12	14 $\frac{3}{8}$	15 $\frac{3}{4}$	17 $\frac{5}{8}$	18 $\frac{3}{4}$	20 $\frac{5}{8}$	24	29 $\frac{1}{4}$	45
	B	4 $\frac{7}{8}$	4 $\frac{7}{8}$	5	5	5 $\frac{1}{8}$	5 $\frac{1}{8}$	5 $\frac{1}{4}$	5 $\frac{3}{8}$	5 $\frac{3}{8}$	5 $\frac{1}{2}$	5	7	7	8
	C	7 $\frac{1}{2}$	9	10	11	13 $\frac{11}{16}$	17 $\frac{1}{2}$	20 $\frac{9}{16}$	22 $\frac{9}{16}$	25 $\frac{1}{2}$	27 $\frac{1}{4}$	31 $\frac{1}{2}$	37 $\frac{3}{16}$	45 $\frac{1}{8}$	53 $\frac{3}{8}$
	D	1 $\frac{5}{16}$	1 $\frac{5}{16}$	1 $\frac{5}{16}$	1	1 $\frac{1}{8}$	1 $\frac{3}{16}$	1 $\frac{1}{4}$	1 $\frac{3}{8}$	1 $\frac{7}{16}$	1 $\frac{9}{16}$	1 $\frac{11}{16}$	1 $\frac{7}{8}$	2 $\frac{1}{8}$	2 $\frac{3}{8}$
	E	4	8	8	8	8	12	12	12	16	16	20	20	28	32
	F	3 $\frac{3}{4}$	3 $\frac{3}{4}$	7 $\frac{7}{8}$	7 $\frac{7}{8}$	7 $\frac{7}{8}$	1	1	1 $\frac{1}{8}$	1 $\frac{1}{8}$	1 $\frac{1}{4}$	1 $\frac{1}{4}$	1 $\frac{3}{8}$	1 $\frac{3}{8}$	1 $\frac{5}{8}$
	G	6	7 $\frac{1}{2}$	8 $\frac{1}{2}$	9 $\frac{1}{2}$	11 $\frac{3}{4}$	14 $\frac{1}{4}$	17	18 $\frac{3}{4}$	21 $\frac{1}{4}$	22 $\frac{3}{4}$	25	29 $\frac{1}{2}$	36	42 $\frac{3}{4}$
	O.D.	5 $\frac{5}{8}$	7 $\frac{3}{8}$	9 $\frac{1}{4}$	10 $\frac{1}{4}$	13 $\frac{1}{8}$	16 $\frac{3}{4}$	20 $\frac{1}{8}$	22 $\frac{3}{8}$	25 $\frac{3}{8}$	27 $\frac{3}{4}$	31 $\frac{1}{8}$	37	45 $\frac{1}{4}$	53 $\frac{1}{4}$

	VALVE SIZE	3"	4"	5"	6"	8"	10"	12"	14"	16"	18"	20"	24"	30"	36"
250 LB. CLASS	A	6	7 $\frac{1}{4}$	8 $\frac{1}{2}$	9	10 $\frac{1}{8}$	12	14 $\frac{3}{8}$	15 $\frac{3}{4}$	17 $\frac{5}{8}$	18 $\frac{3}{4}$	20 $\frac{5}{8}$	24	29 $\frac{1}{4}$	
	B	5	5 $\frac{1}{8}$	5 $\frac{1}{4}$	5 $\frac{3}{8}$	5 $\frac{1}{2}$	5 $\frac{3}{4}$	5 $\frac{7}{8}$	6	6 $\frac{1}{8}$	6 $\frac{1}{4}$	6 $\frac{3}{8}$	6 $\frac{1}{2}$	6 $\frac{3}{4}$	
	C	8 $\frac{1}{4}$	10	11	12 $\frac{1}{2}$	15	17 $\frac{1}{2}$	20 $\frac{1}{2}$	23	25 $\frac{1}{2}$	28	30 $\frac{1}{2}$	36	43	
	D	1 $\frac{1}{8}$	1 $\frac{1}{4}$	1 $\frac{3}{8}$	1 $\frac{7}{16}$	1 $\frac{5}{8}$	1 $\frac{7}{8}$	2	2 $\frac{1}{8}$	2 $\frac{1}{4}$	2 $\frac{3}{8}$	2 $\frac{1}{2}$	2 $\frac{3}{4}$	3 $\frac{5}{8}$	
	E	8	8	8	12	12	16	16	20	20	24	24	24	28	
	F	7 $\frac{7}{8}$	7 $\frac{7}{8}$	7 $\frac{7}{8}$	7 $\frac{7}{8}$	1	1 $\frac{1}{8}$	1 $\frac{1}{4}$	1 $\frac{1}{4}$	1 $\frac{3}{8}$	1 $\frac{3}{8}$	1 $\frac{3}{8}$	1 $\frac{5}{8}$	1 $\frac{5}{8}$	1 $\frac{7}{8}$
	G	6 $\frac{5}{8}$	7 $\frac{7}{8}$	9 $\frac{1}{4}$	10 $\frac{5}{8}$	13	15 $\frac{1}{4}$	17 $\frac{3}{4}$	20 $\frac{1}{4}$	22 $\frac{1}{2}$	24 $\frac{3}{4}$	27	32	39 $\frac{1}{4}$	
	O.D.	5 $\frac{5}{8}$	7 $\frac{3}{8}$	9 $\frac{1}{4}$	10 $\frac{1}{4}$	13 $\frac{1}{8}$	16 $\frac{3}{4}$	20 $\frac{1}{8}$	22 $\frac{3}{8}$	25 $\frac{3}{8}$	27 $\frac{3}{4}$	31 $\frac{1}{8}$	37	45 $\frac{1}{4}$	

DATE  
**09-01-03**



DRWG. NO.  
**S-1400**

SPECIFICATIONS OTHER SIDE



# SPECIFICATIONS

## 1400 SERIES FOOT VALVE

The Foot Valve shall have a heavily constructed cast iron Globe Style Body with integral flanges. The flow area thru the body shall be 10% greater than the equivalent pipe size.

The plug and seat shall be bronze. The plug shall be center guided from both ends to insure positive shut-off. The downstream side of the plug stem shall be guided by a bronze bushing inside the center hub of the body spokes. The upstream side of the plug stem shall be guided by the bore in the center hub of the bronze seat. The seat shall have a resilient Buna-N seal compression molded (not glued or chemically bonded) on it for positive water tight shut-off at low head pressures.

The strainer cap shall be heavy stainless steel expanded metal with a steel flange. The strainer cap shall be bolted to the Foot Valve body.

All materials of construction shall be certified in writing to conform to A.S.T.M. specifications as follows:

Body	Cast iron	ASTM A126 Gr. B
Plug & Seat	Bronze	ASTM B584
Seat seal	Buna-N	
Strainer	Stainless steel	T302
Bolts	Steel	
Exterior Paint	Universal metal primer	FDA Approved for Potable Water Contact

Note: Other materials available.

Valve to be APCO Series 1400 Foot Valve, as manufactured by Valve & Primer Corporation, Schaumburg, Illinois, U.S.A.