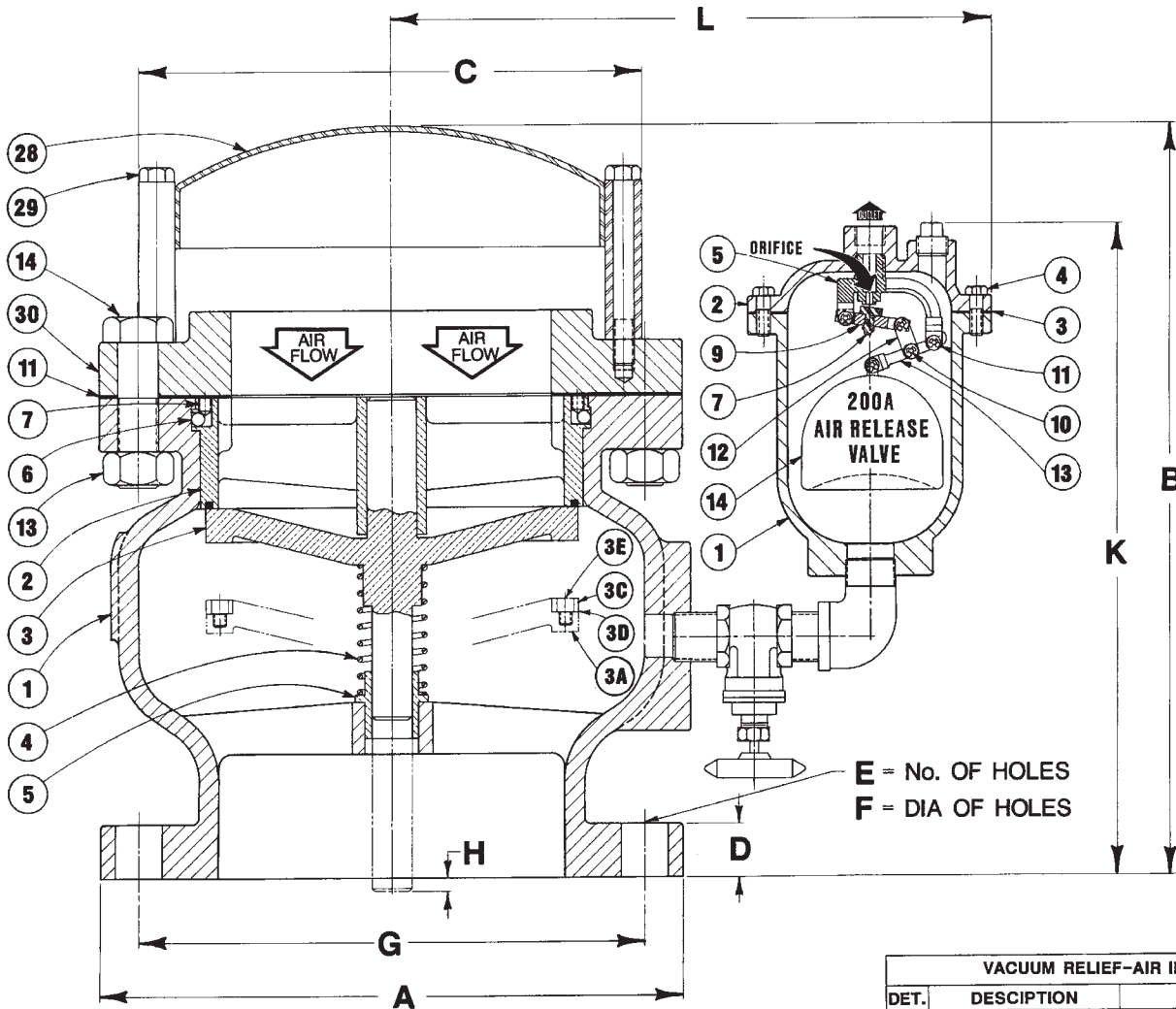


# VACUUM RELIEF-AIR INLET/AIR RELEASE VALVE ( FLANGED TYPE )



VALVE SIZE	3"	4"	5"	6"	8"	10"	12"	14"	16"	18"	20"	24"	30"	36"	
MODEL No.	1503C	1504C	1505C	1506C	1508C	1510C	1512C	1514C	1516C	1518C	1520C	1524C	1530C	1536C	
125 LB. CLASS	A	7 1/2	9	10	11	13 1/2	16	19	21	23 1/2	25	27 1/2	32	36 3/4	46
	B	11	12 1/2	13 1/2	14	15 5/8	18	20 3/4	23	27 1/2	28 1/2	30 1/2	36	43 5/8	57
	C	6	7	10	10	12	16	18	18	18	24	28	32	38	44
	D	15 1/16	15 1/16	15 1/16	1	1 1/8	1 1/8	1 1/8	1 1/8	1 1/8	1 1/8	1 1/8	1 1/8	2 1/8	2 3/8
	E	4	8	8	8	8	12	12	12	16	16	20	20	28	32
	F	3 3/4	3 3/4	7 7/8	7 7/8	7 7/8	1	1	1 1/8	1 1/8	1 1/4	1 1/4	1 1/8	1 1/8	1 1/8
	G	6	7 1/2	8 1/2	9 1/2	11 3/4	14 1/4	17	18 3/4	21 1/2	22 3/4	25	29 1/2	36	42 3/4
	H	0	0	0	0	0	3 3/8	5 1/16	0	11 1/16	1 3/8	1 1/8	2 1/2	3 9/16	0
250 LB. CLASS	A	8 1/4	10	11	12 1/2	15	17 1/2	20 1/2	23	25 1/2	28	30 1/2	36	43	50
	B	11	12 1/2	14	14 3/4	16 3/8	18 3/4	21 1/2	23 3/4	28 1/2	29 1/2	31 1/2	37	44 7/8	58 1/2
	C	6	7	10	10	12	16	18	18	18	24	28	32	38	44
	D	1 1/8	1 1/4	1 3/8	1 7/8	1 5/8	1 7/8	2	2 1/8	2 1/4	2 3/8	2 1/2	2 3/4	3 5/8	4 1/8
	E	8	8	8	12	12	16	16	20	20	24	24	24	28	32
	F	7 7/8	7 7/8	7 7/8	7 7/8	1	1 1/8	1 1/4	1 1/4	1 3/8	1 3/8	1 3/8	1 3/8	1 7/8	2 1/8
	G	6 5/8	7 3/8	9 1/8	10 3/8	13	15 1/4	17 3/4	20 1/4	22 1/2	24 1/2	27	32	39 1/4	46
	H	0	0	0	0	0	3 3/8	5 1/16	0	11 1/16	1 3/8	1 1/8	2 1/2	3 9/16	0
K	50	11 1/2	13 1/2	14 1/2	14 1/2	16 1/2	18 1/2	20	21 1/2	23	23 3/2	25 1/2	28 1/4	32	36 1/4
	200	12 1/2	14 1/4	15	15 1/4	17 1/4	19 1/4	20 3/4	22	23 3/4	24 1/2	26 1/4	29	32 3/4	37
L	50	10 3/4	11 1/4	12	12 1/4	12 3/4	13 3/4	15	15 1/2	16 1/2	17	18	19 3/4	22 1/4	30 1/4
	200	14 3/4	15 1/2	16	16 1/4	16 3/4	17 3/4	19	19 1/2	20 1/2	21 1/4	22 1/2	23 3/4	26 1/2	34 1/4
200	18 1/4	19	19 1/2	17 1/4	20 1/4	21 1/4	22 1/2	23	24 1/4	24 3/4	25 3/4	27 1/4	29	36 3/4	

PRESSURE-VALVE-ORIFICE SELECTION CHART		
PRESSURE RANGE	P	REFERENCE DRAWING NUMBER
0-150	1	S-50
0-300	2	S-200A
	3	S-200

VACUUM RELIEF-AIR INLET VALVE		
DET.	DESCRIPTION	MATERIAL
1	BODY	CAST IRON ASTM A126 Gr. B
2	SEAT	BRASS ASTM B584
3	PLUG	BRASS ASTM B584
4	SPRING	STAINLESS STEEL ASTM A276 T302
5	BUSHING	BRASS ASTM B584 C83600
6	SEAT RETAINING BALL	STAINLESS STEEL ASTM A276 T440
7	SEAT RETAINING SCREW	STAINLESS STEEL 18-8
11	GASKET	LEXIDE (NON-ASBESTOS)
13	FLANGE NUT	STEEL ASTM A307 Gr. B
14	FLANGE BOLT	STEEL ASTM A307 Gr. B
28	HOOD	H. R. S.
29	HOOD BOLT	CAST IRON ASTM A307 Gr. B
30	FLANGE	CAST IRON ASTM A126 Gr. B
FOR 30" & 36"		
3A	PLUG	DUCTILE IRON ASTM A536 65-45-12
3C	PLUG RING	BRASS ASTM B584
3D	GASKET	LEXIDE (NON-ASBESTOS)
3E	PLUG RING SCREW	STAINLESS STEEL 18-8

AIR RELEASE VALVE		
DET	DESCRIPTION	MATERIAL
1	BODY	CAST IRON ASTM A126 Gr. B
2	COVER	CAST IRON ASTM A126 Gr. B
3	COVER GASKET	LEXIDE (NON-ASBESTOS)
4	COVER BOLT	STEEL ASTM A307 Gr. B
5	LEVERAGE FRAME	STAINLESS STEEL ASTM A351
7	NEEDLE	BUNA-N
9	NEEDLE LEVER	STAINLESS STEEL ASTM A351
10	LEVER PIN	STAINLESS STEEL ASTM A582
11	RETAINING LINK	STAINLESS STEEL PH15-Mo
12	CONNECTING LINK	STAINLESS STEEL ASTM A276
13	FLOAT LEVER	STAINLESS STEEL ASTM A351
14	FLOAT	STAINLESS STEEL ASTM A240

DATE  
09-01-03



DRWG. NO.  
S-1500C

SPECIFICATIONS OTHER SIDE

# APCO<sup>®</sup> SPECIFICATIONS

## SERIES 1500C VACUUM RELIEF AIR INLET/AIR RELEASE VALVE

Combination Vacuum Relief Air Inlet/Air Release Valves (double body, double orifice) allow large volume air entry thru the large diameter air inlet orifice when vacuum occurs in a system, then close air tight, trapping air as the system returns to positive pressure. While the large orifice is closed, the smaller 1/16", 3/32", 3/16", 7/32", 3/8" size air release orifice remains open to slowly release trapped air in a controlled manner to prevent water hammer and excess pressure surges. The 3/32", 3/16", 3/8" small orifice Air Release shall operate (open) up to 150 psi... 1/16", 5/32" or 7/32" small orifice shall operate (open) up to 300 psi. (Engineer to select small orifice to suit Air Release control requirement).

The small orifice Air Release Valve shall operate with a stainless steel compound level mechanism actuated by a stainless steel float designed to withstand 500 psi.

The Air Inlet Valve internal plug and seat shall be heavy cast brass; the seat retained in the body by a heavy flange cover. The valve shall have a (molded not glued) resilient Buna-N seal for positive shut-off and a center guided plug (both ends) to prevent jamming. The plug shall be normally closed by means of a stainless steel spring and shall open when a vacuum pressure differential exceeds 0.25 psi or less. The Combination Vacuum Relief Air Inlet/Air Release Valve shall be rated 125 lb. Class.

All 1500C valve internals shall be replaceable without removing the valve from the line and the materials of construction certified, conforming to following A.S.T.M. specifications.

Body, cover	Cast iron	ASTM A126 Gr. B
Plug & seat	Bronze	ASTM B584
Plug (30" & 36")	Ductile iron	ASTM A536 65-45-12
<b>Float*</b>	Stainless Steel	ASTM A240
Seat/ Needle	Buna-N	Nitrile rubber
Hood	Stainless steel	ASTM A276
Lever mech.	Galv. iron or steel	Commercial grade
Exterior Paint	Universal Primer	FDA Approved for Potable Water

**\* Float design may vary on certain sizes**

Note: Other materials available.

Valve to be APCO Series 1500C Vacuum Relief Air Inlet/Air Release Valve, 3" thru 36" manufactured by Valve & Primer Corp., Schaumburg, IL., U.S.A.