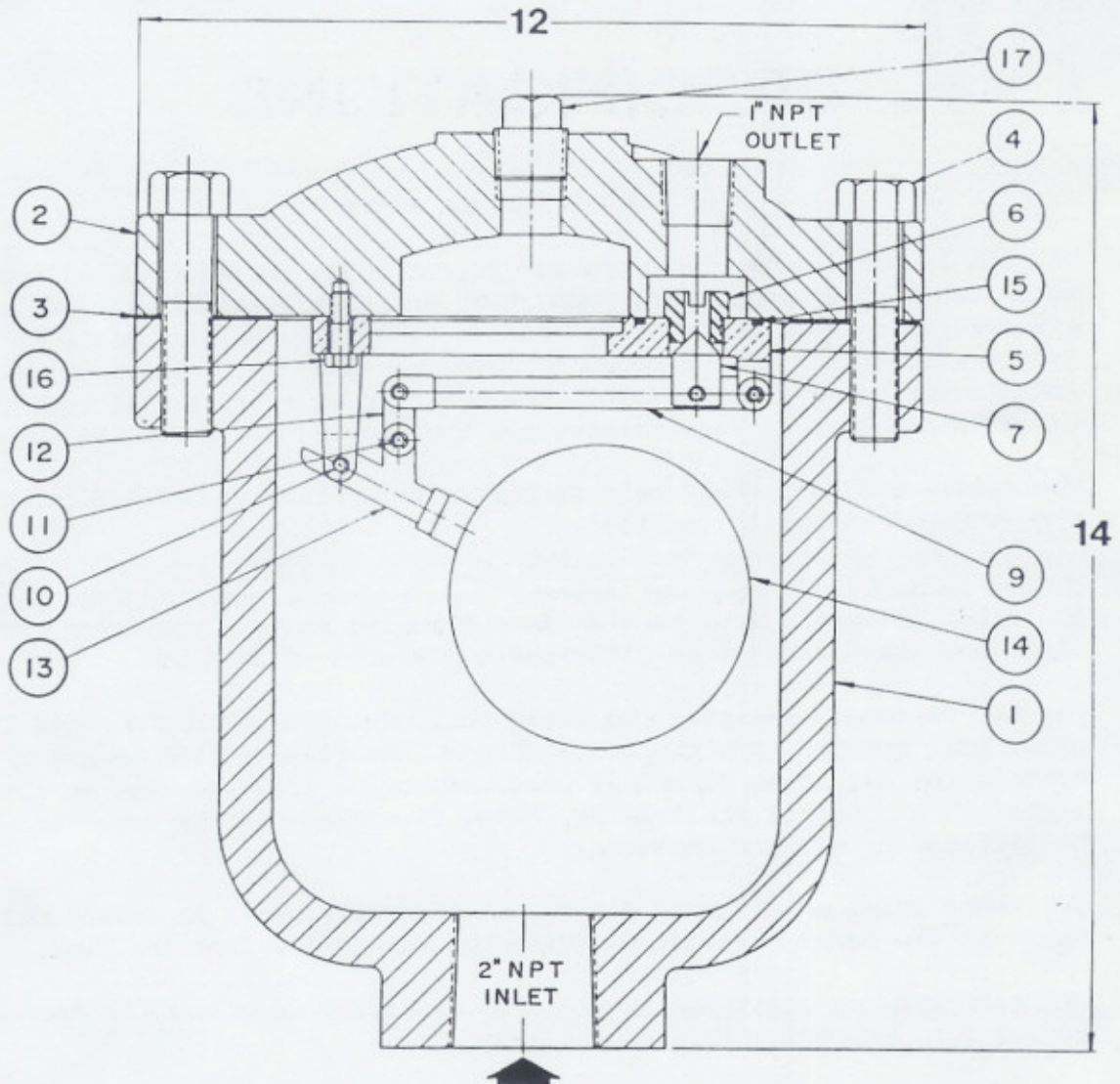


APCO 2"-206 AIR RELEASE VALVE



| DET. | DESCRIPTION | MATERIAL |
|------|---------------------|---------------------------|
| 1 | BODY | DUCTILE IRON ASTM A536 |
| 2 | COVER | DUCTILE IRON ASTM A536 |
| 3 | COVER GASKET | GARLOCK BLUE |
| 4 | COVER BOLT | STEEL ASTM A307 |
| 5 | LEVERAGE FRAME | STAINLESS STEEL T316 |
| 6 | SEAT | STAINLESS STEEL T303 |
| 7 | NEEDLE | STAINLESS STEEL T316 |
| 9 | NEEDLE LEVER | STAINLESS STEEL T316 |
| 10 | LEVER PIN | STAINLESS STEEL T303 |
| 11 | RETAINING RING | STAINLESS STEEL (COMM'L.) |
| 12 | CONNECTING LINK | STAINLESS STEEL T316 |
| 13 | FLOAT LEVER | STAINLESS STEEL T316 |
| 14 | FLOAT | STAINLESS STEEL T304 |
| 15 | LEVERAGE FRAME SEAL | BUNA-N |
| 16 | LEVERAGE FRAME BOLT | STAINLESS STEEL 18-8 |
| 17 | 1" N.P.T. PIPE PLUG | MALLEABLE IRON (COMM'L.) |

MAX. WORKING PRESSURE - 1500 PSI
APPROX. WEIGHT - 125 LBS.

CERTIFIED BY: _____

DATE: _____

DATE

9-1-04

VALVE AND PRIMER CORP.
SCHAUMBURG, ILL.

DRWG. NO.

S-206



SEPTEMBER 1, 2004

SPECIFICATIONS

2" - 206 AIR RELEASE VALVE

The Air Release Valve shall operate (open) while pressurized, allowing any entrained air in a pipeline, pump, tank or water system to escape. After air escapes out the air release orifice, the valve orifice shall be closed by a needle mounting on a compound lever mechanism, (energized by a float) and prevent water from escaping. The air release orifice will then remain closed until more air accumulates and the opening cycle repeats automatically.

The needle and seat shall be stainless steel, precision fitted for tight shut-off and be easily replaced.

The Air Release Valve compound internal lever mechanism shall be stainless steel. All other internals must be stainless steel to prevent corrosion. The stainless steel float must withstand a pressure of 3000 psi.

The Air Release Valve shall be heavy duty, designed with a minimum 1-1/2" thick wall section to withstand 2000 psi line pressure and have a 3/32" orifice for operating (opening) pressure, up to 1500 psi. The venting capacity at 1500 psi shall be 26 CFFAM. Certified venting capacity shall be provided by the manufacturer.

The Valve inlet shall be 2" N.P.T. All internals shall be easily removed thru the top cover, without removing the main valve from the line.

All materials of construction shall be certified in writing to conform to A.S.T.M. specifications as follows:

| | | |
|------------------|------------------------|------------------------|
| Body and cover | Ductile iron | ASTM A536, Gr 65-45-12 |
| Internal linkage | Stainless steel | ASTM A276 T316 |
| Float | Stainless steel | ASTM A240 |
| Needle | Stainless steel | ASTM A276 T316 |
| Seat | Stainless steel | ASTM A582 T303 |
| Exterior paint | Universal metal primer | |

Valve to be APCO Model 2" - 206 Air Release Valve, as manufactured by Valve & Primer Corp., Schaumburg, Illinois, U.S.A.

VALVE AND PRIMER CORPORATION

1420 S. WRIGHT BLVD., SCHAUMBURG, ILLINOIS 60193-4599
847/524-9000 • FAX: 847/524-9007 • 800/323-6969
WEBSITE: www.apcovalves.com • EMAIL: factory@apcovalves.com