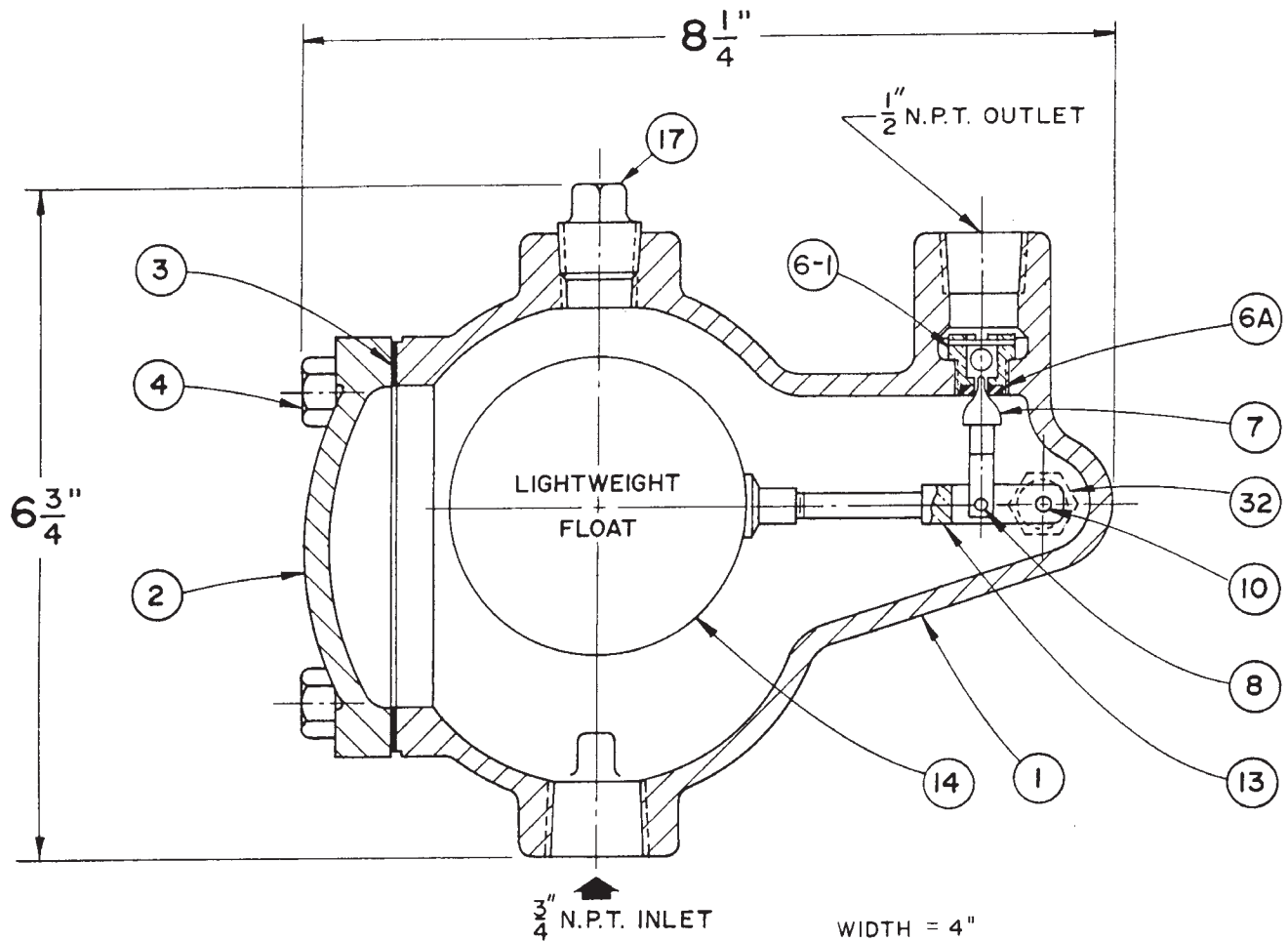


# 3/4" -65F AIR RELEASES VALVE (FOR FUEL SERVICE)



WIDTH = 4"  
WEIGHT = 9 LBS.

WORKING PRESS., PSI	STD. ORIFICE SIZE	MAX. VENTING CAPACITY, CFFAM
0 TO 100	1/8	22

SPECIFY SPECIFIC GRAVITY OF FLUID. \_\_\_\_\_

DET.	DESCRIPTION	MATERIAL
1	BODY	CAST IRON
2	COVER	CAST IRON
3	COVER GASKET	LEXIDE
4	COVER BOLTS	STEEL
6-1	VACUUM BALL SEAT	BRASS
6A	INSERT	BUNA - N
7	NEEDLE	BRASS
8	NEEDLE PIN	STAINLESS STEEL
10	LEVER PIN	BRASS
13	FLOAT LEVER	BRASS
14	FLOAT	STAINLESS STEEL
17	1/2" PIPE PLUG	CAST IRON
32	SIDE PLUG	BRASS

CERTIFIED BY: \_\_\_\_\_  
DATE: \_\_\_\_\_

DATE  
09-01-03



DRWG. NO.  
S-65F

SPECIFICATIONS OTHER SIDE

# APCO<sup>®</sup> SPECIFICATIONS

## 3/4" - 65F AIR RELEASE VALVE (FOR FUEL SERVICE)

The Automatic Air Release Valve shall operate (open) under pressure and allow entrapped air to escape from the fuel pipeline or pump. After air escapes out of the Air Release Valve orifice, the orifice shall close by means of a simple lever mechanism to prevent the fluid (having a lighter specific gravity than water) from escaping. The orifice will then stay closed until more air accumulates inside and the open cycle will repeat automatically.

The needle shall be brass, positively guided into the seat orifice for tight shut-off. The seat shall be brass with a Buna-N insert and a minimum 1/8" orifice and a built in ball check to permit air out (but no air in) under vacuum conditions. The brass seat shall be slotted for replaceability without need to dismantle the main valve. The Air Release Valve shall be rated to operate (open) under pressures up to 100 psi and shell tested at 300 psi.

The Air Release Valve shall have a 3/4" NPT inlet, a 1/2" NPT outlet and a 1/2" NPT accessory connection with a removable plug for future mounting of a test gauge or test cock.

All materials of construction shall be certified in writing to conform to A.S.T.M. specifications as follows:

Body & Cover	Cast Iron	ASTM A126, Gr.B
Internal parts	Brass	ASTM B16
Float (Light-Weight)	Stainless steel	ASTM A240
Exterior Paint	Universal Primer	FDA Approved for Potable Water

Valve to be APCO Model 65F Simple Lever Air Release Valve (For Fuel Service), as manufactured by Valve & Primer Corporation, Schaumburg, Illinois, U.S.A.