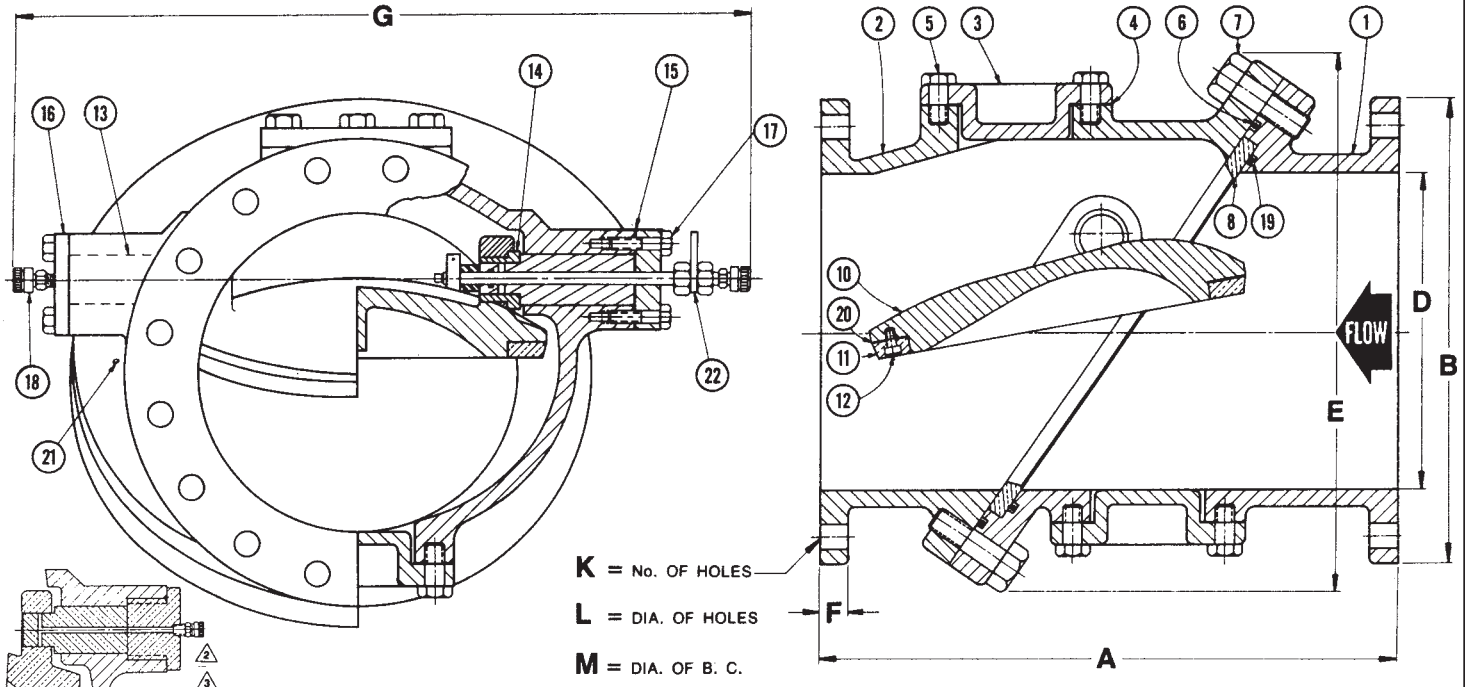


SLANTING DISC CHECK VALVE



2" TO 6"
PIVOT PIN DETAIL

DET.	DESCRIPTION	MATERIAL
1	SEAT BODY HALF	CAST IRON ASTM A126 GR. B
2	PIVOT BODY HALF	CAST IRON ASTM A126 GR. B
3	INSPECTION HOLE COVER	CAST IRON ASTM A126 GR. B
4	INSPECTION HOLE GASKET	LEXIDE (NON-ASBESTOS)
5	INSPECTION HOLE BOLTS	STEEL ASTM A307 GR. B
6	DIAGONAL FLANGE SEAL	BUNA-N
7	DIAGONAL FLANGE BOLTS	STEEL ASTM A307 GR. B
8	SEAT RING	BRONZE ASTM B271 ALLOY C92200
10	DISC	DUCTILE IRON ASTM A536
11	DISC RING	BRONZE ASTM B271 ALLOY C92200
12	DISC RING SCREWS	STAINLESS STEEL ASTM A276 T304
13	PIVOT PIN	STAINLESS STEEL ASTM A582 T303
14	PIVOT PIN BUSHING	STAINLESS STEEL ASTM A269 T304
15	PIVOT PIN GASKET	LEXIDE (NON-ASBESTOS)
16	PIVOT PIN COVER	CAST IRON ASTM A126 GR. B
17	PIVOT PIN COVER BOLTS	STEEL ASTM A307 GR. B
18	GREASE FITTING	STEEL ZINC PLATED
19	SEAT RING SEAL	BUNA-N
20	DISC RING GASKET	LEXIDE (NON-ASBESTOS)
21	LOCATING PIN	STEEL ZINC PLATED
22	INDICATOR ASSEMBLY	STAINLESS STEEL ASTM A269 T304

NOTE:
 ⚠ STANDARD MATERIAL FOR DISC ON SIZES 2" THRU 10" IS BRONZE ASTM B584 ALLOY C90700 AND DETAILS 11, 12 & 20 ARE NOT REQUIRED
 ⚠ STANDARD MATERIAL FOR PIVOT PIN ON SIZES 2" THRU 10" IS ALUMINUM BRONZE ASTM B150 AND DETAIL 14 IS NOT REQUIRED. (REFER TO PIVOT PIN DETAIL)
 ⚠ INDICATOR IS NOT AVAILABLE ON 2", 3" & 4" VALVES.
 ⚠ GREASE FITTINGS ARE NOT AVAILABLE ON 2", 3" & 4" VALVES.
 ⚠ INSPECTION HOLE IS NOT AVAILABLE ON 2", 3" & 4" VALVES.

CERTIFIED BY: _____
 DATE: _____

125 LB. FLANGE VALVES
 RATED WORKING PRESSURE:
 2" THRU 12" - 200 PSI
 14" THRU 72" - 150 PSI

250 LB. FLANGE VALVES
 RATED WORKING PRESSURE:
 2" THRU 12" - 350 PSI
 14" THRU 72" - 300 PSI

VALVE SIZE	125 LB. FLANGE																250 LB. FLANGE																					
	2"	3"	4"	6"	8"	10"	12"	14"	16"	18"	20"	24"	30"	36"	42"	48"	54"	60"	72"	2"	3"	4"	6"	8"	10"	12"	14"	16"	18"	20"	24"	30"	36"	42"	48"	54"	60"	72"
MODEL No.	802	803	804	806	808	810	812	814	816	818	820	824	930	836	842	848	854	860	872	802	803	804	806	808	810	812	814	816	818	820	824	930	836	842	848	854	860	872
A	9 1/2	9 1/2	11 1/2	15	19 1/2	24 1/2	24	30	30	33	32	38	52	59 1/2	62 1/2	65	78	87	106	9 1/2	12 1/2	11 1/2	15	19 1/2	24 1/2	24	30	30	33	32	38	52	59 1/2	62 1/2	65	78	87	106
B	6	7 1/2	9	11	13 1/2	16	19	21	23 1/2	25	27 1/2	32	38 3/4	46	53	59 1/2	66 1/4	73	86 1/2	6 1/2	8 1/4	10	12 1/2	15	17 1/2	20 1/2	23	25 1/2	28	30 1/2	36	43	50	57	65	*	*	*
D	2	3	4	6	8	10	12	14	16	18	20	24	30	36	42	48	54	60	72	2	3	4	6	8	10	12	14	16	18	20	24	30	36	42	48	54	60	72
E	7 3/8	8 1/2	9 3/4	13 1/4	15 1/2	18	21	25	28	30	31 1/2	36 1/2	46 1/2	51	58	67 1/2	71	84	102	7 3/8	8 1/2	9 3/4	13 1/4	15 1/2	18	21	25	28	30	31 1/2	36 1/2	46 1/2	51	58	67 1/2	71	84	102
F	5/8	3/4	15/16	1	1 1/8	1 3/16	1 1/4	1 3/8	1 7/16	1 9/16	1 11/16	1 7/8	2 1/8	2 3/8	2 5/8	2 3/4	3	3 1/8	3 1/2	7/8	1 1/8	1 1/4	1 7/16	1 5/8	1 7/8	2	2 1/8	2 1/4	2 3/8	2 1/2	2 3/4	3	3 3/8	3 11/16	4	*	*	*
G	8 1/2	9	11	17 1/2	22	25 1/2	27	33	36	38	41	48	57	62 1/2	63	72	77	90	125	8 1/2	9	11	17 1/2	22	25 1/2	27	33	36	38	41	48	57	62 1/2	63	72	77	90	125
K	4	4	8	8	8	12	12	12	16	16	20	20	28	32	36	44	44	52	60	8	8	8	12	12	16	16	20	20	24	24	24	28	32	36	40	*	*	*
L	3/4	3/4	3/4	7/8	7/8	1	1	1 1/8	1 1/8	1 1/4	1 1/4	1 3/8	1 3/8	1 5/8	1 5/8	2	2	2	3/4	7/8	7/8	7/8	1	1 1/8	1 1/4	1 1/4	1 3/8	1 3/8	1 5/8	2	2 1/4	2 1/4	2 1/4	*	*	*		
M	4 3/4	6	7 1/2	9 1/2	11 3/4	14 1/4	17	18 3/4	21 1/4	22 3/4	25	29 1/2	36	42 3/4	49 1/2	56	62 3/4	69 1/4	82 1/2	5	5 5/8	7 7/8	10 5/8	13	15 1/4	17 3/4	20 1/4	22 1/2	24 3/4	27	32	39 1/4	46	52 3/4	60 3/4	*	*	*
APPROX. WEIGHT	50	55	82	164	265	510	650	1044	1050	1535	1685	2650	5850	7600	9000	14000	16000	28241	44000	55	65	93	199	357	573	693	1179	1600	1890	2100	3300	6800	8300	10500	18000	21000	34000	55000

* TO BE SUPPLIED BY CUSTOMER *

DATE
 09-01-03



DRWG. NO.
 S-800

SPECIFICATIONS OTHER SIDE

APCO[®] SPECIFICATIONS

SERIES 800-SLANTING DISC CHECK VALVES

The body shall be heavy two piece cast iron, not fabricated steel. The two (2) body halves and body seat shall be O-Ring sealed and bolted together in a manner to sandwich the body seat on a 55° angle. Each body half must have an ACCESS COVERED HOLE for internal inspection and each BODY HALF AND DISC must be fully machined to accept future attachment of a Bottom Buffer or Top Mounted Oil Dashpot. The SEAT RING and DISC RING must be of the design that permits replaceability in the field without need for special tools or machining. The PIVOT PINS in the body and the BUSHINGS in the disc lugs must be stainless steel* of different hardnesses to prevent galling. The BUSHINGS shall be PRESSFIT to prevent wear. An INDICATOR shall be provided to show position of the disc. The area throughout the valve body must be equal to full pipe area. The area thru the seat section shall be 40% larger than the inlet and outlet of the valve to achieve lowest head loss.

The manufacturer shall have been regularly engaged in the design and manufacture of Slanting Disc Check Valves for at least five (5) years and submit at least five (5) similar installations in service for a minimum of five (5) years for engineer approval prior to release to manufacturer.

All materials of construction to be certified in writing to conform to A.S.T.M. specifications as follows:

Bodies	Cast iron	ASTM A126 Gr. B
Disc (2" thru 10")	Bronze	ASTM A584
Disc (12" & larger)	Ductile iron	ASTM A536
Seat ring & Disc ring	Bronze	ASTM B271 C92200
*Pivot pins(12" thru 10")	Aluminum bronze	ASTM B150 Alloy 2
Pivot pins (12"& larger)	Stainless steel	ASTM A582 T303
Pivot pin bushings	Stainless steel	ASTM A269 T304
Exterior Paint	Universal primer	FDA Approved for Potable Water Contact

Note: Other materials available.

Valve to be APCO Series 800 Slanting Disc Check Valve as manufactured by & Primer Corporation, Schauburg, Illinois, U.S.A.